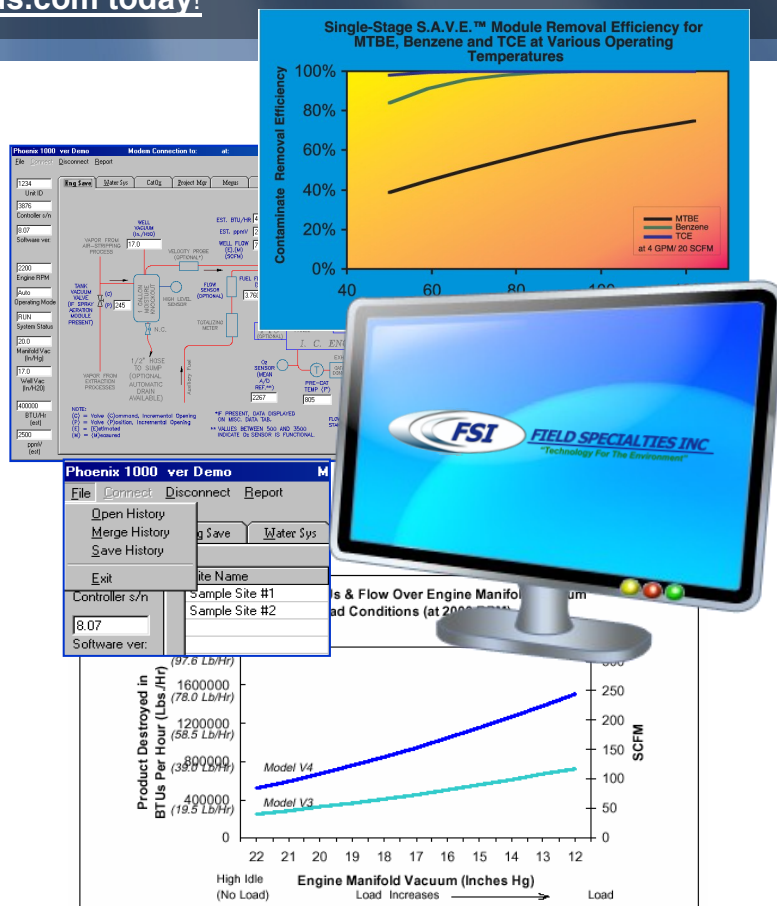


To optimize system performance, including contaminant extraction and destruction efficiency, RSI has developed a fully automated, user-friendly, computer control system for its modular remediation systems. The Phoenix S.A.V.E.™ Controller maximizes vapor flow from the extraction wells and minimizes alternate fuel consumption simultaneously. The electronic controller senses any deviation from the stoichiometric air-to-fuel (A/F) ratio to optimize contaminant destruction and meet stringent air emissions standards. With the ability to optimize system operation to meet Air Quality Control standards, the patented computerized control system is cutting-edge technology. **See us online @ www.fsi-us.com today!**

Maintaining optimal A/F ratio is challenging with variations in site conditions, such as fluctuating hydrocarbon, oxygen or carbon dioxide concentrations. Competing systems require constant operator input to adjust to changing conditions.

The Phoenix S.A.V.E.™ Controller can handle virtually any change in site conditions, from a slug of free product to a temporary loss of supplemental fuel. In the event of system shutdown based on the automatic detection of an incorrect operating condition, the computer can be preprogrammed to restart after verifying that all operating conditions are correct.



Monitor and control any site anywhere from your desktop workstation

In the event of a system shut down, the optional telemetry system can report unit status to the technician on call.

The Phoenix S.A.V.E.™ Controller will not start the engine when a safety "kill" switch has been activated, for instance, due to high engine temperature, low oil pressure or high water level in the moisture knockout tank.

U.S. Patent: 4,846,34; 4,979,886
Canadian Patent: 1,287,805

The Phoenix S.A.V.E.™ Controller has proven cost effective for our S.A.V.E.™ systems. Increased runtime, less-frequent maintenance visits, and reduced cleanup costs are achieved with this breakthrough technology. Truly innovative environmental solutions. "Patents Pending"



Corporate Office | 7887 FM 2004 Hitchcock,
TX 77563 | Ph: 1.855.827.4845 | info@fsi-us.com
CA.-License # 923444 | LA.-License # 41609

West Coast Region | 2020 W 17th Street Long
Beach, CA 90813 | Ph: 562.685.8300
dave@fsi-us.com or tina@fsi-us.com